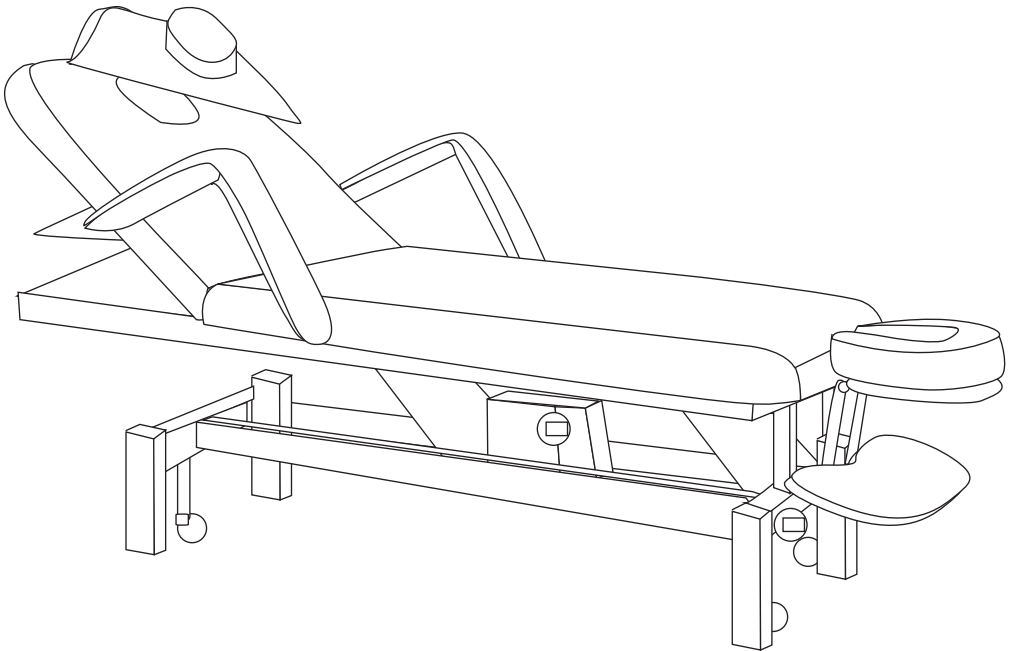


quattro II treatment table

#6064

QUATTRO II





IMPORTANT PLEASE READ THESE SAFETY INSTRUCTIONS

Listed below are essential safety precautions.

GENERAL SAFETY

1. Read carefully and keep these instructions in a safe place.
2. Use this product only for its intended function and do not use attachments not recommended by the manufacturer.
3. Do not use outdoors.
4. Do not try to move the table when in use.

ELECTRICAL APPLIANCES

1. All GPO's must be installed by a qualified Electrician in accordance with local electrical standards.
2. DO NOT allow children to operate the electric motors in this product.
3. Turn the power off and remove the plug when not in use.
4. Turn the power off and remove the plug when cleaning.
5. Do not let the power cord get damaged in any way.
6. Keep the power cord away from heat sources.
7. Do not use an extension cord unless the cord complies with local electrical safety standards.
8. Periodically inspect the power cord for signs of damage.
9. Do not operate any electrical item with a damaged power cord.



IMPORTANT

KEEP FINGERS AND HANDS AWAY FROM TABLE JOINTS UNDER THE TABLE



IMPORTANT

DO NOT ALLOW CHILDREN AROUND THE TREATMENT TABLE WHEN IN USE



IMPORTANT

DO NOT ALLOW CHILDREN TO OPERATE THE ELECTRIC MOTORS THAT MOVE THE TABLE



IMPORTANT

DO NOT USE AROUND WATER OR IN A WET ENVIRONMENT

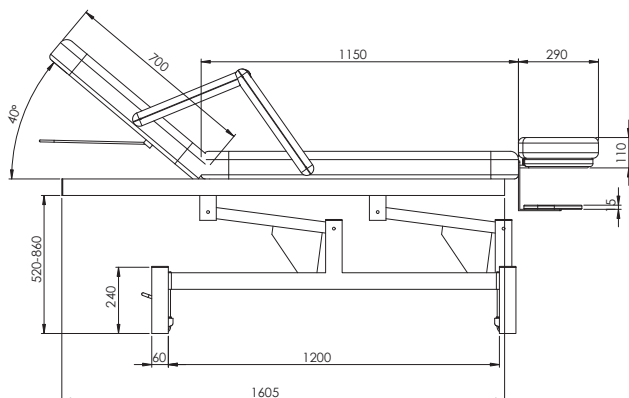
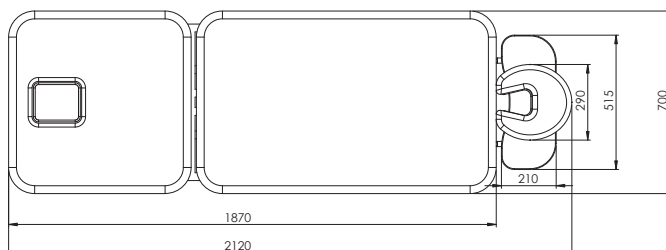


IMPORTANT

WHEN REPLACING ANY PARTS OR ASSEMBLING THE TABLE, YOU MUST ENSURE THE TABLE IS RESTING ON ITS SIDE TO SAFEGUARD FROM CRUSH INJURY

GET STARTED

TOP VIEW FLAT POSITION



All measurements are in MM.

LINAK 
WE IMPROVE YOUR LIFE

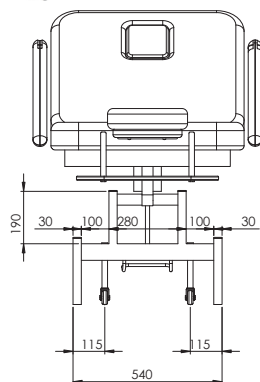
QUATTRO II

Beauty bed with electric adjustment

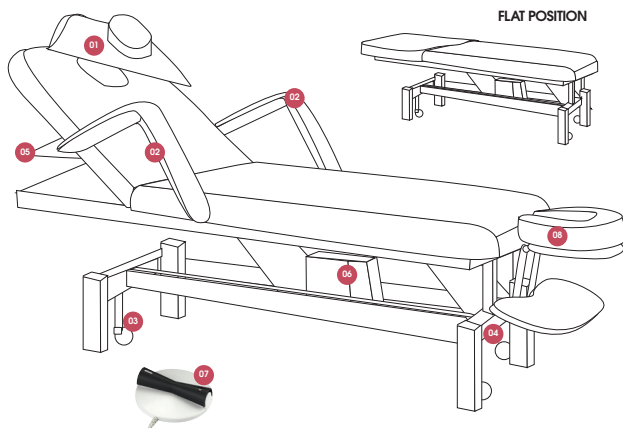
- Width: 650mm (880mm with arms)
- Length: 1870mm (2120mm with face cradle)
- Height Range: 52cm-86cm
- Electric height adjustment
- Manual back adjustment
- Foot control



OPTIONAL UPGRADE BATTERY for back up power supply



PARTS



PARTS

1. Removable head rest
2. Removable arm rests
3. Wheels (x4)
4. Foot lever to activate movement of 4 wheels
5. Lever to operate gas-lift back rest /Up/Down
6. Electric motor
7. Foot control remote
8. Removable face cradle and arm holder

OPERATION

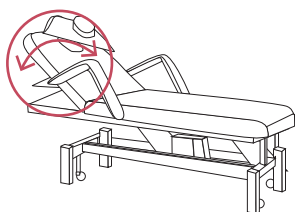
FOOT CONTROL



Adjust the height range of the treatment table with the electric foot control.

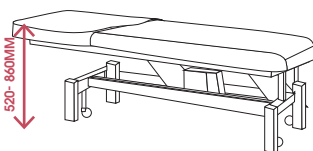
1. - Moves the bed down
2. + Moves the bed up

FUNCTIONS



BACK ADJUSTMENT

Located behind the back rest, adjust the backrest up and down using the lever.

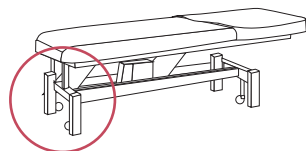


HEIGHT ADJUSTMENT

Using the foot control, adjust the table height by going up or down.

Minimum Height: 520mm

Maximum height: 860mm



WHEEL MECHANISM

Located on the bottom of the foot-end of the treatment table, the Sit-Stand lever adjusts the wheels into a locked or movable position.

By pushing down the lever, adjust the wheels from the stand-by (locked) position, to the movable position. When you have moved the table into position, make sure the lever is returned in lock position so that the table is stable.

WARRANTY PERIOD

PERIOD AND DESCRIPTION	PRODUCTS
12 MONTHS PARTS & LABOR	All products
2 YEARS PARTS ONLY	All products excluding small electrical appliances
3 YEARS PARTS ONLY	All Linak electric actuators
5 YEARS PARTS ONLY	Taps cartridge, Ceramic basins
TERMS AND CONDITIONS	

For more information about our terms and conditions including warranty, please refer to our website.

MAINTENANCE

A periodic inspection of all components and fasteners should be made to ensure that your Comfortel Product is structurally intact and functioning properly.

Damaged and broken parts should be replaced and loose fasteners tightened.

All maintenance to be carried out by a suitably qualified tradesperson.

⚠ IMPORTANT
WHEN REPLACING ANY PARTS OR ASSEMBLING THE TABLE, YOU MUST ENSURE THE TABLE IS RESTING ON ITS SIDE TO SAFEGUARD FROM CRUSH INJURY

CLEANING

UPHOLSTERY

- All upholstery needs some care; good housekeeping will help to prolong the life of any upholstered products.
- Avoid extreme temperatures. Extreme cold can make your vinyl prone to cracking, while extreme heat can cause permanent stretching.
- Avoid exposing to direct sunlight for prolonged periods of time.

ALWAYS FOLLOW THE CLEANING INSTRUCTIONS

- Clean regularly (weekly) to remove body oils which cause hardening
- To clean use a sponge which has been moistened in warm soapy water
- After cleaning with a sponge, dry with a soft, clean cloth
- Stubborn grime may require gentle scrubbing with a soft brush

Do not use:

- acetone
- furniture polishes
- bleach
- detergent
- abrasive cleaners
- steel wool

Damage caused by any improper treatment of this product is not covered by the product warranty.

comfortel

comfortel.com.au

PRODUCT CODE

#6064 QUATTRO II TREATMENT TABLE

1 X 10AMP GPO REQUIRED
POWER: 240V, 50-60HZ, MAX 2.4A
MAX LOAD: 150KG

Revision Date: 28.06.2018

©Comfortel Furniture 1997-2018. All rights are reserved.
No part of this document may be photocopied, reproduced or translated to another language without written consent of Comfortel Furniture Pty Ltd.

The information contained in this document is subject to change without notice and should not be construed as a commitment by Comfortel Furniture Pty Ltd.

Comfortel Furniture Pty Ltd. assumes no responsibility for any errors that may appear in this document nor does it make expressed or implied warranty of any kind with regard to this material, including, but not limited to, the implied warranties of merchantability and fitness for a particular purpose.

Comfortel Furniture Pty Ltd. shall not be liable for incidental or consequential damages in connection with or arising out of the use of this document and the program material.

PLEASE RETAIN THIS INFORMATION FOR FUTURE REFERENCE

For more information about our products and services, contact us at comfortel.com.au

PURCHASE DATE

INVOICE NUMBER

NOTE YOUR PURCHASE DATE & INVOICE NUMBER FOR FUTURE REFERENCE